



Our Lady's Catholic Primary School

52-60 White Street, Wangaratta Vic 3677

Correspondence to:
PO Box 486
Wangaratta 3676

Phone: (03) 5721 3783 Fax: (03) 5721 9401
Email: principal@olwangaratta.catholic.edu.au

Our Lady's Primary School is a child safe school. All students enrolled, and any child visiting, have a right to feel safe and be safe.

NEWSLETTER NO. 16 TUESDAY MAY 28th 2019

This week we observe National Reconciliation Week. This week commemorates two significant dates:

- May 27th the day that the 1967 referendum removed the clauses in the Constitution that discriminated against Aboriginal and Torres Strait Islanders
- June 3rd when the Mabo High Court native title decision was made.

Our school will be gathering with other schools from our area this morning at 11.00am to celebrate a Mass that focusses on this week. One of the actions that our school is committed to taking is that as often as we can, on the occasions that we gather, we acknowledge the country on which we gather is linked to the Yorta Yorta Nation and specifically the Pangerang tribe. Our acknowledgement is as follows:

"As we gather on this sacred land let our voices join theirs. We are standing on the country of the Yorta Yorta Nation and its 8 clans, including the Pangerang people of Wangaratta. In the spirit of reconciliation we commit to walk together in truth and justice."

**Lord,
open up our hearts so that we may hear the message you teach of a world in
which the wrongs of the past are recognised;**

a world in which a reconciled people walk and talk together sharing stories;

a world in which all burn with the desire to have your peace and justice reign.

We ask this in Jesus' name.

Amen.





CLASS MASSES/LITURGIES

Tuesday June 4th Leadership Centre (hosting the Foundation/Discovery Centre) Mass
Friday June 28th Whole School Mass – Sacred Heart of Jesus

All Masses are held in Our Lady's Church at 9.00am and everyone is most welcome to join us for these celebrations.

PARISH MASSES

Masses for this weekend are:

* Saturday	6.00 pm	St. Patrick's
* Sunday	8.00 am	St. Patrick's
* Sunday	9.00 am	Our Lady's
* Sunday	10.00 am	Moyhu
* Sunday	10.30 am	Whitfield (1st Sunday)
* Sunday	10.30 am	St. Patrick's

Our Lady's typically has week day Masses on Tuesday and Friday both commencing at 9:00am. Some changes may happen if funerals are held on these days.

CONFIRMATION / FIRST EUCHARIST

Well done to Oscar Bell, Ruby Williams and Brylee Dacre for their efforts in preparing for the celebration of Confirmation and First Eucharist this weekend. They have spent part of the last six weeks preparing for this important celebration. Our Lady's will be hosting the Mass this Sunday June 2nd starting at 9:00am.

BRIDGING CENTRE CAMP THANKS

Last week our Year Three and Four students spent three days touring Echuca on their 2019 school camp. As a school we could not have been more pleased with their behaviour and decision making. These types of excursions often shine a light on the social skill of the children as they spend extended time together with their peers. It was very satisfying to see so many of them positively live out the expectations that the school and their families have of them. Well done to all involved in this very successful event.

REPORT WRITING DAY

This coming **Monday June 3rd** Our Lady's will be having a **Pupil Free day**. Staff will use the day to prepare Term Two reports.

Please note that the school will be closed on Monday and the office will reopen on Tuesday at 8.30am.

COUNCIL VISIT

The council visit of the mayor Dean Rees and councillor Ashlee Fitzpatrick has been postponed to Thursday June 6th. The meeting is designed to have the children get to know some of the members of our local government leadership and to have the council members ask the students about some of the activities of the council. They will be here at 12:45pm and will meet in the Fr. James Byrne hall. If you are interested in coming along please feel free to do so.

ANNUAL REPORT

Attached to this newsletter is the 2018 Annual Report to the community. It contains information about various aspects of school life including actions from 2018 and our some of our plans for 2019. It also contains data from a number of compliance areas.

ATTENDANCE

Also attached to this newsletter is some information from the Victorian Government about the importance of regular school attendance. The government has identified regular school attendance as an issue that they would emphasis as it can have direct influence on the learning growth of students. I strongly encourage all families to read the article and to look at the way they manage the attendance of their children at school.

MONDAY MORNING ASSEMBLY THANK YOU

At the start of each week we give thanks for some of the positive behaviours that we noted in the past week. It is an opportunity to acknowledge helpful behaviours, it raises language that highlights good choices and it models the need to regularly thank people in a way that communicates what we are thankful for. This week we gave thanks:

- To all students who do their best by choosing to be honest as often as they can
- For giving your full effort as often as possible because this helps everyone to succeed
- To everyone who respects our school by following directions
- To all the Foundation, Year One and Two students for the positive choices at the netball clinics
- To the Year Three and Four students for their positive behaviour choices on their camp

POSITIVE BEHAVIOUR EXPECTATIONS

Our expectations focus for this week is '**Being Thankful**':

<u>Do your best:</u>	We do our best when we choose to be thankful to everyone
<u>Helping others succeed:</u>	We help others succeed when we choose to use our manners
<u>Respecting your school:</u>	We show our respect for our school when we move through areas with cars with an adult
<u>Power Play Focus:</u>	Students who are thankful

Congratulations to Lillie Brockwell who was the winner of last week's PowerPlay Raffle draw.

Mark

P & F NEWS

CHOCOLATE DRIVE

It's chocolate drive time. This year we have chosen a different box with smaller chocolates- Cadbury Carmello, Milk Chocolate, Milky Tops and Strawberry - (120 in each box) that are to be **sold/bought for 2 for \$1-00.** If you sell the whole box you need to return \$60-00.

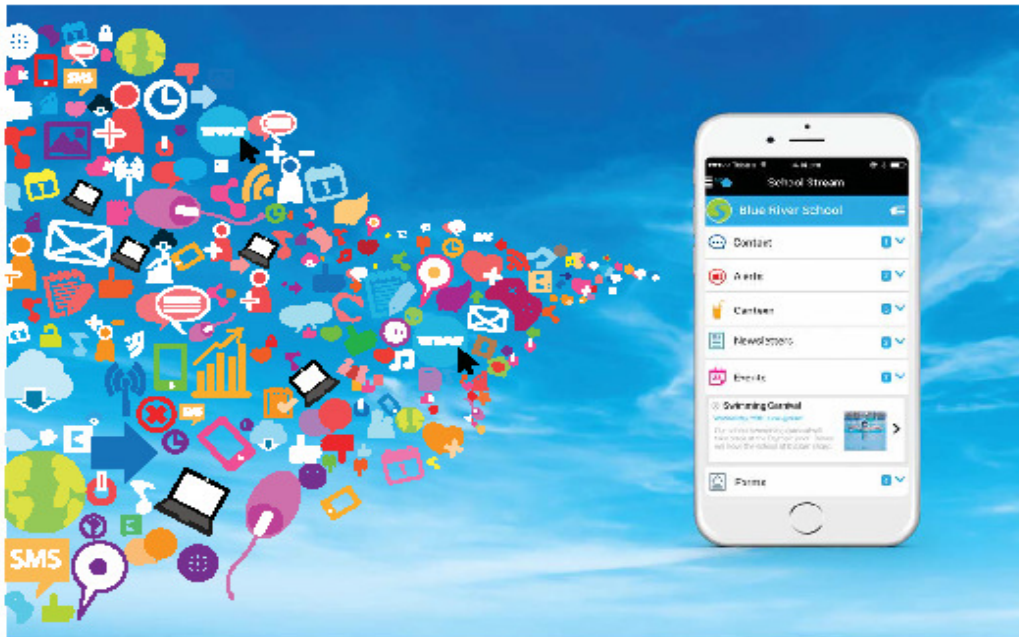
All money and any unsold chocolates must be returned to the office by **Friday June 14th 2019.**

DATES TO REMEMBER

Friday	May 31 st	2.00pm 5/6 Football/Netball here v. St. Pat's Green
Sunday	June 2 nd	9.00am Our Lady's Confirmation/First Eucharist Mass
Monday	June 3rd	Pupil Free Day – Report Writing (school closed)
Tuesday	June 4 th	9.00am Leadership Centre Mass <i>All Welcome</i>
Friday	June 7 th	2.00pm 5/6 Football/Netball at Cathedral College
Monday	June 10th	Queen's Birthday Public Holiday
Friday	June 14 th	Chocolate drive money due into the office 2.00pm 5/6 Football/Netball here v. Wang. West
Friday	June 21 st	2.00pm 5/6 Football/Netball here v. Appin Park
Friday	June 28 th	9.00am Whole School Mass – Sacred Heart of Jesus <i>All Welcome</i> End of Term Two
Monday	July 15 th	Start of Term Three
Tuesday	July 23 rd	School Board meeting 6.30pm
Wednesday	July 24 th	Grandparents Day

Your school now has a **FREE** app

Receive school information, instantly and directly to your smartphone



How to download your **FREE** app

- 1 From your mobile device go to the **App Store (iPhone/iPad)** OR **Google Play (Android)** search for **School Stream** and download the app to your phone
- 2 Make sure you agree to **push notifications**
- 3 Once School Stream has finished installing, open the app, type your school name into the search **THEN** select your school

For more detailed instructions go to schoolstream.com.au/download

 **schoolstream**
A smart solution for smart schools
www.schoolstream.com.au • 1300 721 270

Anyone can earn stickers to help local schools

The Woolworths Earn & Learn program gives schools and Early Learning Centres around Australia the chance to earn amazing school equipment. In 2017 we had over 15,000 schools and Early Learning Centres involved, and delivered over 300,000 new pieces of equipment to kids all over Australia.

Here's what to do:

collect

Between 1 May and 25 June 2019, collect as many stickers as you can.

stick

Stick them on the sticker sheets and give them to your local school or Early Learning Centre. Or drop them into a collection box in store.

Don't forget, you can always download and print extra sticker sheets at woolworths.com.au/earnandlearn

Need more information?

To read our Frequently Asked Questions and Terms & Conditions visit woolworths.com.au/earnandlearn

woolworths
earn & learn

Sticker Sheet

Let's stick together with Earn & Learn



woolworths
earn & learn

Start collecting today

2019 TUCKSHOP : TERM TWO and THREE ONLY

During Term Two and Term Three lunch orders will be available on WEDNESDAYS.

Please check this year's price list below and put the menu somewhere handy.

If your child wishes to order his/her lunch

THE ORDER MUST BE WRITTEN ON A BROWN PAPER BAG

(you can purchase packs of these from any supermarket) – the lunch will be packed into the bag and given to your child.

On this bag you need to write:

Child's name and class and what they wish to order for lunch and whether or not they want sauce.

E.G. James Brown Foundation Centre (Carmody)

1 pie with sauce \$ 4-00

TOTAL \$ 4-00

The money needs to be put inside the bag (*if possible please put the correct money into the bag*) and placed in the tub in your child's classroom by 9.00am. Orders are then collected and lunches will be distributed by the class teacher at lunchtime.

PLEASE NOTE:

If your child arrives at school after 9.15am they **WILL NOT be able to place a lunch order for that day.** You can however hand their order into the office on the day prior if you know they will be late on the Wednesday.

****PLEASE NOTE**:** **I.OU.'S ARE NOT ACCEPTABLE.**

NO MONEY IN THE BAG – NO LUNCH ORDER. YOU WILL BE CONTACTED TO BRING IN YOUR CHILD'S LUNCH.

If your child forgets to hand their lunch order in (or hands the order in after 9.15am), you will again be contacted to bring in lunch for them.

2019 TUCKSHOP MENU
TERMS TWO AND THREE ONLY (WEDNESDAYS)

Hot Dog (Plain)	\$3-50
Hot Dog (With Cheese)	\$4-00
Homemade Hawaiian Pizza	\$4-00
Steamed Dim Sim	\$1-00
Homemade Sushi	
Vegetarian	\$3-50
Chicken	\$3-50
Plain Meat Pie	\$4-00
Sausage Roll	\$3-50
Party Pie	\$1-00
Vegetable Pastie	\$4-00
Ham <u>or</u> chicken salad roll (lettuce, tomato, cucumber, carrot & cheese)	\$5-50
Salad only roll	\$5-00

Please note sauce is included in the price but you need to make sure you write on the order if your child wants sauce.